

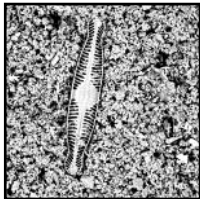
REU at PSU: Apply Now!

F YgYUfW '9I dYf]YbW'Zcf 'I bXYf[fUXi UhYg'

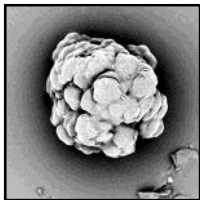
5 'BU]cbU'GWYbW': ci bXU]cb'Dfc[fUa'



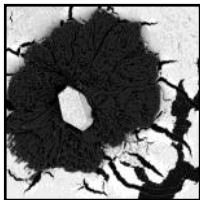
Earn \$4,000



Learn Electron
Microscopy



Actively Participate
in New Research



Visit a Local
High-Tech Company



Present at the
Annual Symposium

F9I 'dfc[fUa 'UhiDGI' is now recruiting highly motivated undergraduate students—with an emphasis on female, veteran, and minority students—studying science or engineering and interested in gaining research experience this summer.

Program Dates:

June 23rd - August 18th, 2014

8 weeks/40 hours per week

Training provided!

F YgYUfW 'Cddcfh b]h]Yg.'

- Physics / Nanotechnology
- Chemistry
- Biology
- Electrical and Computer Engineering
- Mechanical and Materials Engineering
- Environmental Science

APPLICATION DEADLINE: MARCH 1st

For more information and to apply:
www.reu.pdx.edu